



**REGIONAL SPECIALISED METEOROLOGICAL CENTRE-TROPICAL CYCLONES, NEW DELHI  
TROPICAL WEATHER OUTLOOK**

**DEMS-RSMC SPECIAL TROPICAL CYCLONES NEW DELHI DATED 19.07.2022**

**TROPICAL WEATHER OUTLOOK FOR NORTH INDIAN OCEAN (THE BAY OF BENGAL AND ARABIAN SEA) VALID FOR NEXT 120 HOURS ISSUED AT 0600 UTC OF 19.07.2022 BASED ON 0300 UTC OF 19.07.2022.**

**BAY OF BENGAL:**

SCATTERED LOW AND MEDIUM CLOUDS WITH EMBEDDED MODERATE TO INTENSE CONVECTION LAY OVER EAST BAY OF BENGAL, ANDAMAN SEA, ARAKAN COAST, GULF OF MARTBAN & TENASSERIM COAST. ISOLATED WEAK TO MODERATE CONVECTION LAY OVER WEST BAY OF BENGAL.

**PROBABILITY OF CYCLOGENESIS (FORMATION OF DEPRESSION) DURING NEXT 120 HRS:**

24 HOURS	24-48 HOURS	48-72 HOURS	72-96 HOURS	96-120 HOURS
NIL	NIL	NIL	NIL	NIL

**ARABIAN SEA:**

YESTERDAY'S WELL MARKED LOW PRESSURE AREA OVER CENTRAL PARTS OF NORTH ARABIAN SEA WEAKENED INTO A LOW PRESSURE AREA OVER NORTHWEST AND ADJOINING NORTHEAST ARABIAN SEA AT 0900 UTC OF SAME DAY (THE 18<sup>TH</sup> JULY). IT LAY AS A CYCLONIC CIRCULATION OVER NORTHWEST ARABIAN SEA OFF NORTH OMAN COAST AT 0300 UTC OF TODAY, THE 19<sup>TH</sup> JULY, 2022.

SCATTERED LOW AND MEDIUM CLOUDS WITH EMBEDDED ISOLATED MODERATE TO INTENSE CONVECTION LAY OVER NORTHWEST ARABIAN SEA & SOUTHEAST ARABIAN SEA LAKSHADWEEP ISLANDS AREA. SCATTERED LOW AND MEDIUM CLOUDS WITH EMBEDDED WEAK TO MODERATE CONVECTION LAY OVER REST OF ARABIAN SEA, GULF OF KUTCH AND GULF OF CAMBAY.

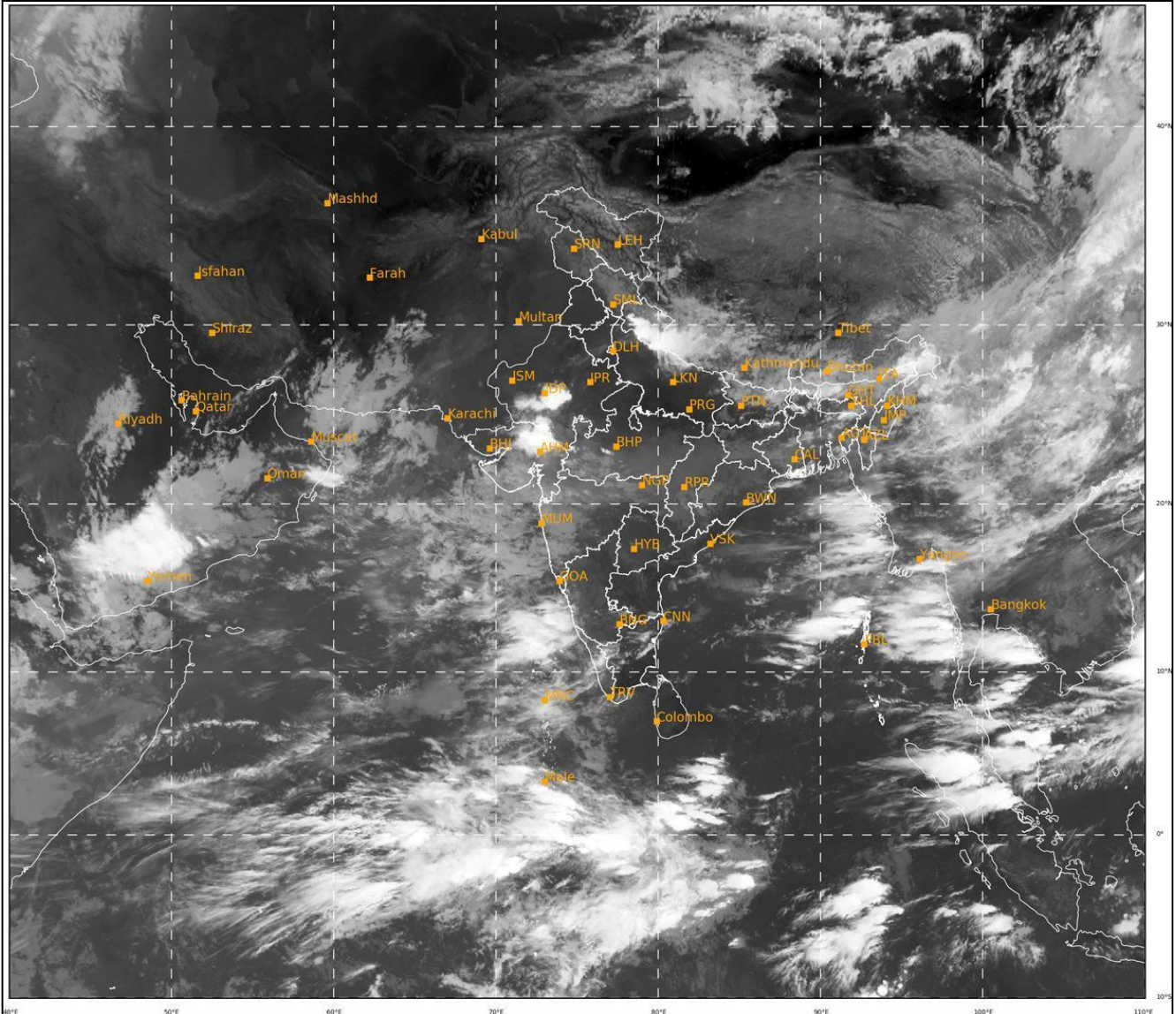
**PROBABILITY OF CYCLOGENESIS (FORMATION OF DEPRESSION) DURING NEXT 120 HRS:**

24 HOURS	24-48 HOURS	48-72 HOURS	72-96 HOURS	96-120 HOURS
NIL	NIL	NIL	NIL	NIL

**REMARKS:** NIL

SAT : INSAT-3D IMG  
IMG\_TIR1 10.8 um  
LIC Mercator

19-07-2022/(0300 to 0327) GMT  
19-07-2022/(0830 to 0857) IST



386

928

IMD, DELHI

Cloud distribution: (a) Isolated: <25%, Scattered:25-50%, Broken: 51-75%, Solid:>75%, Convection Intensity: (a) Weak: Cloud Top Temperature (CTT) >-25°C, (b) Moderate: CTT: - 25°C to -40°C, (c) Intense: CTT: - 41°C to -70°C and (d) Very Intense: : Less than -70°C  
PROBABILITY OF CYCLOGENESIS (FORMATION OF DEPRESSION): NIL: 0%, LOW: 1-33%, MODERATE: 34-66% AND HIGH: 67-100%  
This is a guidance Bulletin for WMO/ESCAP Panel Member countries. Visit respective National websites for Country specific Bulletins